



## Digby Street, London, , E2 0LR £2,100 PCM

Elms Estates are Hugely Excited to be able offer to the Rental Market this fabulous Two Double Bedroom Top Floor Apartment situated within a short walk of either Bethnal Green (Central Line) or Stepney Green (District Line) Tube Stations.

The Forum offers Bright and Spacious Accommodation and a Modern Fitted Kitchen and Bathroom. The large Double Glazed Windows fill all of the rooms with light. The Forum is also situated within the Heart of Bethnal Green with easy access to all of the Restaurants, Bars, Shops, Gyms, Parks, Galleries and Museums this Exciting Area has on offer.

The property is available to move in to from 31 January 2026 onwards. An early internal inspection is highly recommended in order to avoid disappointment.

For more information or to arrange a viewing please do not hesitate to call in and speak with one of our Property Consultants.





**Lounge**  
12'5" x 11'5" (3.80 x 3.50)

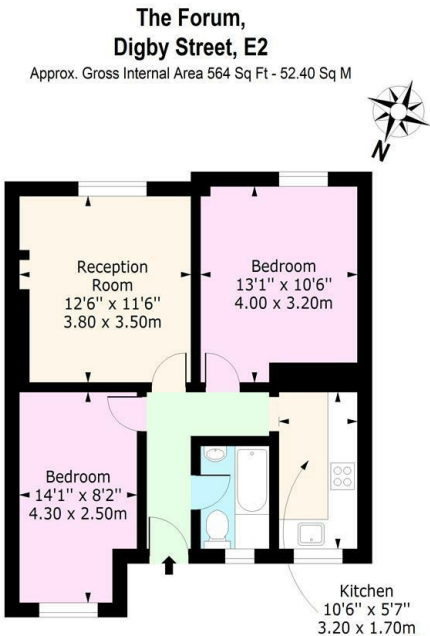
**Kitchen**  
10'5" x 5'6" (3.20 x 1.70)

**Bedroom One**  
13'1" x 10'5" (4.00 x 3.20)

**Bedroom Two**  
14'1" x 8'2" (4.30 x 2.50)

**Bathroom**

**Material Information**  
Deposit: £2,423.07  
Length Of Tenancy: One Year  
Council Tax Band: C



**Fourth Floor**  
Floor Area 564 Sq Ft - 52.40 Sq M

For Illustration Purposes Only - Not To Scale  
[www.jpaplius.com](http://www.jpaplius.com)

Energy Efficiency Rating		Environmental Impact (CO <sub>2</sub> ) Rating	
Current	Potential	Current	Potential
Very energy efficient - lower running costs		Very environmentally friendly - lower CO <sub>2</sub> emissions	
(92 plus) <b>A</b>		(92 plus) <b>A</b>	
(81-91) <b>B</b>		(81-91) <b>B</b>	
(69-80) <b>C</b>		(69-80) <b>C</b>	
(55-68) <b>D</b>		(55-68) <b>D</b>	
(39-54) <b>E</b>		(39-54) <b>E</b>	
(21-38) <b>F</b>		(21-38) <b>F</b>	
(1-20) <b>G</b>		(1-20) <b>G</b>	
Not energy efficient - higher running costs		Not environmentally friendly - higher CO <sub>2</sub> emissions	
England & Wales		England & Wales	
EU Directive 2002/91/EC		EU Directive 2002/91/EC	